

A Comparative Study of Risk Factors and Prognosis in Young and Elderly Patients with Acute ST-Segment Elevation Myocardial Infarction

Shaohua Wang¹, Dianyao Ruan¹, Min Zhang¹, Hongya Zhou², Wenyuan Wang², Ruiwei Guo^{3*}

¹Clinical Medical College of Dali University, Dali 671003, China

²Kunming Medical University, Kunming 650032, China

³920th Hospital of Joint Logistic Support Force of PLA, Kunming 650032, China

*Corresponding author: Ruiwei Guo, grw771210@163.com

Copyright: © 2024 Author(s). This is an open-access article distributed under the terms of the Creative Commons Attribution License (CC BY 4.0), permitting distribution and reproduction in any medium, provided the original work is cited.

Abstract: *Objective:* To investigate the differences in risk factors and prognosis between young and elderly patients with acute ST-segment elevation myocardial infarction (STEMI) so as to provide a basis for the prevention of young patients with acute STEMI. *Methods:* Patients initially diagnosed with STEMI in the 920th Hospital of Joint Logistic Support Force of PLA from January 1, 2018 to December 31, 2022 were retrospectively enrolled in this study. A total of 235 STEMI patients aged ≤ 45 years old and 532 STEMI patients aged ≥ 65 years old were screened. The baseline characteristics, laboratory indicators, clinical characteristics, coronary angiography, SYNTAX score and major adverse cardiovascular events (MACE) during 1-year follow-up were analyzed and compared. *Results:* A total of 767 STEMI patients were enrolled, including 235 in the young group and 532 in the elderly group. Among the STEMI patients in the young group, 224 cases were male, and smoking and drinking were common. Compared with the elderly group, the young group had shorter hospital stays and more family history of ischemic heart disease (IHD). The level of low-density lipoprotein in the young group was higher than that in the old group, while the level of high-density lipoprotein in the young group was lower than that in the old group. The level of high uric acid and homocysteine in the young group was significantly higher than that in the old group. The main cause of STEMI in the young group was fatigue, and the most common symptom was angina pectoris. Coronary angiography showed that single vessel disease was more common in the young group than in the elderly group, and the lesion in the young group was the left anterior descending artery. The SYNTAX score was significantly lower in the young group than in the elderly group according to the anatomical characteristics of coronary artery disease. In the forest plot, diabetes mellitus and a family history of IHD showed a trend of major adverse cardiovascular events (MACE) in both groups. *Conclusion:* Males, smokers, alcohol drinkers and family history of ischemic heart disease are more common in young patients. Common risk factors include fatigue, hyperuricemia, hyperlipidemia and so on. In addition, age itself is an independent risk factor. Management of diabetes, hyperuricemia, and homocysteine levels is essential to reduce the incidence of cardiovascular events in young patients. By controlling these factors, the incidence of young patients with acute STEMI can be effectively prevented and the corresponding prevention and treatment basis can be provided.

Keywords: Acute ST-segment elevation myocardial infarction; Young people; Elderly people; Risk factors

Online publication: July 17, 2024

1. Introduction

According to surveys, the prevalence of cardiovascular disease (CVD) is increasing year by year, and the annual mortality rate of myocardial infarction (MI) is 17%. MI is still one of the main causes of death in the world, which seriously endangers human physical and mental health ^[1]. Asia is one of the regions with the highest incidence of cardiovascular diseases in the world ^[2]. According to the survey, by 2023, the number of people with coronary heart disease in Asia will exceed that in other regions ^[3]. Developing countries have an increased risk of acute myocardial infarction (AMI) and an earlier onset of AMI than developed countries ^[4]. The aim of this study is to investigate the risk factors, clinical characteristics, laboratory parameters, coronary angiography and prognostic factors of STEMI in young people aged ≤ 45 years and ≥ 65 years old, and to provide evidence for the prevention of STEMI in young people in China.

2. Research methods

2.1. Study population

Patients admitted to the 920th Hospital of the Joint Logistics Support Force of the People's Liberation Army from January 2018 to January 2022 who were first diagnosed with STEMI according to the new clinical classification of acute myocardial infarction and underwent PCI within 12 hours were retrospectively analyzed. A total of 235 STEMI patients aged ≤ 45 years old and 532 STEMI patients aged ≥ 65 years old were enrolled.

2.2. Inclusion and exclusion indicators

Inclusion criteria: patients with a definite diagnosis of first acute ST-segment elevation myocardial infarction after admission. Exclusion criteria included chronic liver and kidney insufficiency, pulmonary heart disease, malignant tumour, haematological disease, acute inflammatory or infectious disease, immunodeficiency disease, heart valve disease, etc., and patients with incomplete hospitalization data.

2.3. Baseline data and laboratory indicators

Through the database of the cardiology center of our hospital and electronic medical records, the following were measured:

- (1) Baseline data (age, gender, MBI, history of hypertension, history of diabetes, history of smoking, history of drinking, family history of ischemic heart disease, length of hospital stays).
- (2) Laboratory indicators: triglyceride (TG), total cholesterol (TC), low-density lipoprotein (LDL), high-density lipoprotein (HDL), fasting blood glucose, C-reactive protein (CRP), serum creatinine (CR), uric acid (UA), homocysteine (HCY), creatine kinase isoenzyme (CK-MB).
- (3) Angiography: All subjects underwent coronary angiography (CAG) within 12 months after STEMI. This article describes the procedure of CAG and the evaluation criteria for coronary artery lesions, and the results were evaluated by two independent, experienced associate directors and/or attending physicians. Coronary artery stenosis was defined as a greater than 50% reduction in lumen diameter in any of the three coronary arteries or their major branches. Statistical analysis was performed by the number of single-vessel diseased vessels and multivessel diseased vessels on coronary angiography.
- (4) The SYNTAX score was calculated using the website (www.syntaxscore.com) based on the coronary angiography data before PCI. The SYNTAX score was calculated by the Cardiovascular interventional Imaging Analysis Core Laboratory of the 920th Hospital of the Joint Logistics Support Force of PLA. The subjects were divided into 3 groups according to SYNTAX score. SYNTAX score ≤ 22 was de-

defined as 'low group, $22 < \text{SYNTAX score} \leq 32$ was defined as medium group, and SYNTAX score > 32 was defined as high group.

- (5) Killip classification: Killip classification was evaluated according to cardiac function damage in acute myocardial infarction: Grade I (no signs of heart failure, but pulmonary capillary wedge pressure can be increased, mortality 0–5%), grade II (mild to moderate heart failure, pulmonary rales appear in less than 50% of both lung fields, third heart sound gallops, persistent sinus tachycardia or other arrhythmias, increased venous pressure, pulmonary congestion X-ray findings, mortality 10–20%). Grade III (moderate heart failure, acute pulmonary oedema, pulmonary rales appear more than 50% of both lungs, fatality rate 35–49%). Grade IV (cardiogenic shock, systolic blood pressure < 90 mmHg, urine < 20 mL/hour, clammy skin, cyanosis, accelerated respiration, pulse rate > 100 beats/min, mortality 85–90%).
- (6) Comparative analysis of clinical characteristics: Clinical symptoms such as precordial pain, sweating, and dyspnea were compared and analyzed, and patients with obvious inducements such as fatigue, staying up late, emotional excitement, excessive exercise, and cold stimulation were compared and analyzed.

2.4. Follow-up results

Telephone and clinical follow-ups were conducted at 30 days, 3 months, 6 months and 12 months after discharge, and the median follow-up time was 5.5 months. The main follow-up visit recorded adverse cardiovascular events within 1 year, including death, recurrent myocardial infarction, cardiogenic shock, malignant arrhythmia, stroke, rehospitalization for heart failure and recurrence of angina pectoris. The above adverse cardiovascular events were statistically analyzed.

2.5. Statistical analysis

SPSS 26.0 was used for statistical analysis. Measurement data in accordance with normal distribution were expressed in the form of $\bar{x} \pm s$, and the differences between the two groups were compared using the independent sample *t*-test. The measurement data that did not meet the normal distribution were expressed in the form of *M* (Q1, Q3), and the nonparametric rank sum test was used. Count data were expressed in the form of *n* (%) and analyzed by chi-square test. $P < 0.05$ was considered statistically significant.

3. Results

3.1. Baseline characteristics

The baseline characteristics of the enrolled population are shown in **Table 1**. The mean age of the young group (≤ 45 years old) and the older group (≥ 65 years old) was 38.67 ± 5.45 years old and 72.65 ± 5.53 years old, respectively ($P < 0.001$). Compared with the elderly group, the young group had more males that is, 95.3% and 68% ($P < 0.01$), smokers of 85.5% and 47.2% ($P < 0.01$), and alcohol drinkers of 77.4% 26.9% ($P < 0.01$), family history of ischemic heart disease (IHD) of 23.8% and 7.5%, ($P < 0.01$), respectively. All the differences were statistically significant ($P < 0.05$). The prevalence of hypertension and diabetes was lower in the young group than in the elderly group (16.6% vs 60.9%, 5.1% vs 23.1%, respectively, $P < 0.01$).

Table 1 Comparison of baseline characteristics between the two groups

Variables	Age ≤ 45 (n = 235)	Age ≥ 65 (n = 532)	P value
Age (years)	38.67 ± 5.45	72.65 ± 5.53	< 0.001
Gender (male/female)	224/11	362/170	< 0.001
BMI* (kg/m ²)	24.3 ± 3.8	24.66 ± 3.93	0.236
Smoking history	201 (85.5)	251 (47.2)	< 0.001
Drinking history	182 (77.4)	143 (26.9)	< 0.001
History of hypertension	39 (16.6)	324 (60.9)	< 0.001
History of diabetes	12 (5.1)	123 (23.1)	< 0.001
Family history of IHD [†]	56 (23.8)	40 (7.5)	< 0.001
Length of stay	10.62 ± 3.75	15.69 ± 4.52	< 0.001

*BMI: Obesity index

[†]IHD: Ischemic heart disease

3.2. Laboratory indicators

The laboratory indexes of the enrolled population are shown in **Table 2**. The TG (2.41 ± 1.95 vs 1.19 ± 1.16 , $P < 0.01$) and LDL-C (3.22 ± 1.46 vs 3.02 ± 1.11 , $P = 0.037$) of the young group were higher than those of the elderly group, while HDL-C was lower in the young group than in the elderly group (1.07 ± 0.37 vs 1.18 ± 0.36 , $P < 0.001$). In addition, the levels of UA (443.32 ± 188.86 vs 364.53 ± 108.98 , $P < 0.001$) and HCY (16.42 ± 6.7 vs 14.37 ± 12.7 , $P = 0.020$) in the young group were significantly higher than those in the elderly group. However, there was no significant difference in the levels of CRP, Cr and CK-MB between the two groups.

Table 2 Comparison of laboratory indexes in different age groups

Variables	Age ≤ 45 (n = 235)	Age ≥ 65 (n = 532)	t	P-value
TG (mmol/L)	2.41 ± 1.95	1.19 ± 1.16	10.738	< 0.001
TC (mmol/L)	6.19 ± 2.16	6.28 ± 28.17	0.047	0.962
LDL-C (mmol/L)	3.22 ± 1.46	3.02 ± 1.11	2.089	0.037
HDL-C (mmol/L)	1.07 ± 0.37	1.18 ± 0.36	3.956	< 0.001
Fasting blood glucose (mmol/L)	7.45 ± 1.11	7.84 ± 2.44	2.355	0.019
Serum creatinine (μmol/L)	83.96 ± 15.12	84.73 ± 48.09	0.241	0.810
Uric acid (μg/L)	443.32 ± 188.86	364.53 ± 108.98	8.355	< 0.001
HCY (μmol/L)	16.42 ± 6.7	14.37 ± 12.7	2.334	0.020
CRP (mg/L)	15.94 ± 14.79	16.31 ± 9.48	0.426	0.670
BNP (pg/ml)	88.34 ± 37.05	91.70 ± 43.79	0.240	0.811
CK-MB (U/L)	327.51 ± 126.83	339.54 ± 192.5	0.877	0.380
cTnI (U/L)	19.21 ± 5.37	23.28 ± 6.42	8.519	< 0.001

3.3. Coronary angiography characteristics and clinical characteristics of the two groups were analyzed

Table 3 shows that single-vessel disease was more common in young patients (63.8% vs 13.5%, $P < 0.01$), while multi-vessel disease was more common in elderly patients (11.9% vs 36.7%, $P < 0.01$). In the young

group, the left anterior descending coronary artery was the main diseased vessel (85% vs 69%, $P < 0.01$), which might be related to smoking and hyperuricemia (85.5% vs 47.2%, $P < 0.001$; 443.32 ± 188.86 vs 364.53 ± 108.98 , $P < 0.001$). In the elderly, the right coronary artery accounted for 71.2% vs 26.4% ($P < 0.001$). SYNTAX score was used to quantitatively evaluate the complexity of coronary artery lesions based on the location, severity, bifurcation, calcification and other anatomical characteristics of coronary artery lesions. SYNTAX score was (12.57 ± 6.13 vs 27.66 ± 6.8 , $P < 0.001$) in the young group and the elderly group. The degree of vascular lesions in the elderly group was higher than that in the young group. It may be related to hypertension and diabetes (60.9% vs 16.6%, $P < 0.001$; 23.1% vs 5.1%, $P < 0.001$). Killip grade IV was significantly lower in the young group than in the elderly group (5.5% vs 24.6%, $P < 0.001$). In terms of inducing factors of acute myocardial infarction, the young group had higher mental stress (anxiety and depression) than the elderly group (63.4% vs 16.4%, $P < 0.001$). Precordial pain was more typical in the young group than in the elderly group (76.2% vs 36.5%, $P < 0.001$).

Table 3 Comparison of angiographic characteristics, SYNTAX score, Killip grade, and clinical characteristics between the two groups

Variables	Age \leq 45 ($n = 235$)	Age \geq 65 ($n = 532$)	<i>P</i> value
Vascular disease variables			< 0.001
Single-vessel coronary artery disease	150 (63.8)	72 (13.5)	
Double-vessel coronary artery disease	57 (24.3)	265 (49.8)	
Multivessel coronary artery disease	28 (11.9)	195 (36.7)	
Diseased vessels			
LAD lesions	200 (85.1)	368 (69.2)	< 0.001
LCX lesions	86 (36.6)	440 (82.7)	< 0.001
RCA lesions	62 (26.4)	379 (71.2)	< 0.001
Killip grading			< 0.001
III	26 (11.1)	54 (10.2)	
IV	13 (5.5)	131 (24.6)	
SYNTAX score	12.57 ± 6.13 ,	27.66 ± 6.8	< 0.001
Triggers			
Staying up late is mentally stressed (depression)	149 (63.4)	87 (16.4)	< 0.001
Emotional	17 (7.2)	76 (14.3)	0.006
Excessive exercise	15 (6.4)	178 (33.5)	< 0.001
Cold stimulation	35 (14.9)	91 (17.1)	0.446
No obvious trigger	34 (14.5)	93 (17.5)	0.301
Symptoms			
Pain in the precordial area	179 (76.2)	194 (36.5)	< 0.001
Dyspnea	126 (53.6)	298 (56.0)	0.538
Big sweat	56 (23.8)	123 (23.1)	0.830

LAD: left anterior descending vessel; LCX: left circumflex vessel; RCA: right coronary artery

3.4. Analysis of predictors of cardiac events

The differences in clinical manifestations between the cardiovascular event group and the non-cardiovascular event group are shown in **Table 4**. **Figure 3** represents the Kaplan-Meier curves for MACE in the two groups at 1 year of follow-up. **Figure 1** and **Figure 2** showing that all MACE events were compared between the younger group and the older group. Hyperuricemia was the most significant predictor in the young group (OR: 1.013, 95% CI: 1.008–1.018, $P < 0.001$). Diabetes mellitus (OR: 6.453, 95% CI:1.037–40.14, $P = 0.046$; OR: 3.861, 95% CI: 2.376–6.275, $P < 0.001$), family history of IHD (OR: 3.336, 95% CI: 1.218–9.136, $P = 0.019$; OR: 2.516, 95% CI: 1.205–5.255, $P = 0.014$) had predictive value for MACE events in both young group and elderly group.

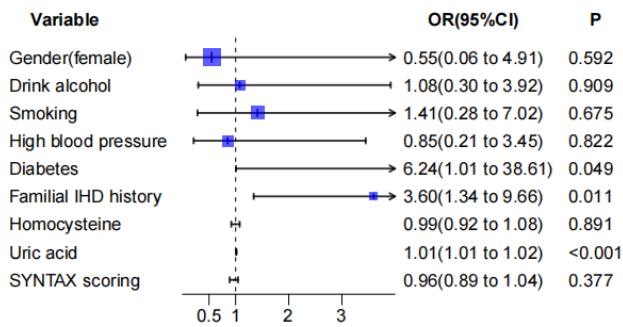


Figure 1. Forest plot of influencing factors in the youth group.

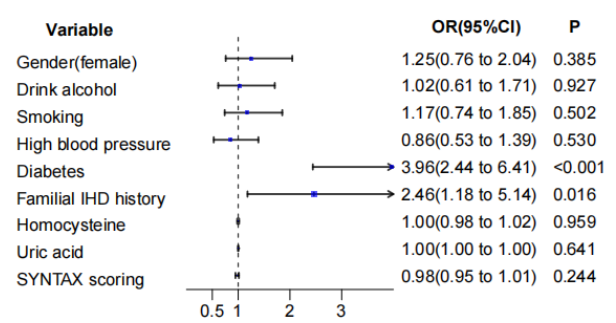


Figure 2. Forest map of influencing factors in the elderly group.

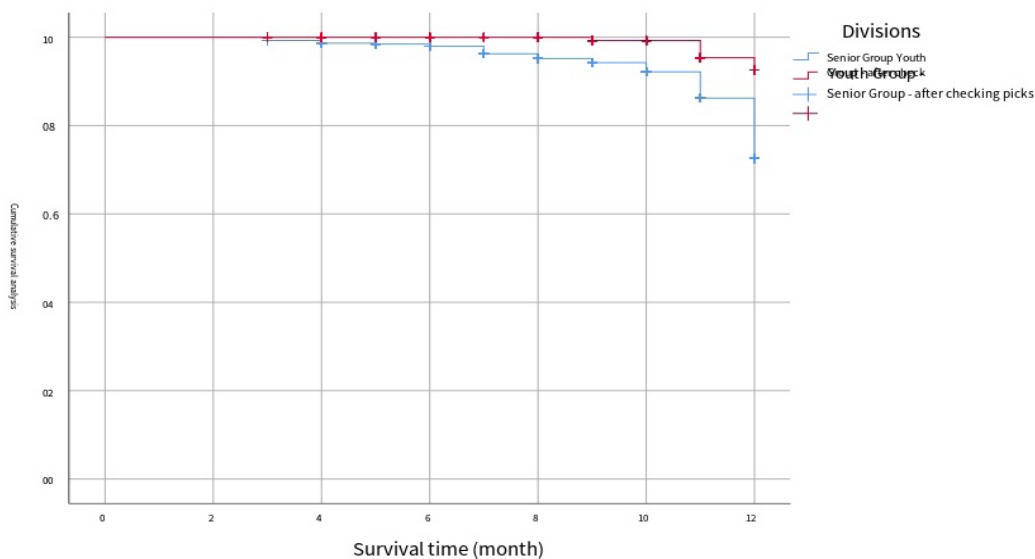


Figure 3. Kaplan-Meier curves of MACE events during 1 year of follow-up between the young and elderly groups.

Table 4 Results of Log Rank test

	χ^2	Degree of freedom, df	P
Log Rank (Mantel-Cox)	13.549	1	< 0.001

4. Discussion

According to the baseline characteristics of the enrolled population (**Table 1**), both young patients and old patients have a history of smoking and drinking. In contrast, young patients have a higher incidence of smoking and drinking than the elderly, which may be related to the changes in the current social environment and the

psychological pressure accompanied by economic development. Young patients mostly have a family history of cardiovascular disease, and older patients mostly have a history of chronic underlying diseases such as hypertension and diabetes, which can obviously be seen to be related to physical conditions. By comparing the laboratory indexes of the enrolled population (see **Table 2**), the TG and LDL-C of the young patients were significantly higher than those of the elderly patients, and the HDL-C was significantly lower than that of the elderly patients. As we all know, hyperlipidemia is one of the necessary conditions for atherosclerosis, and it is also an important factor involved in the occurrence and development of acute myocardial infarction^[5]. It is well known that hyperlipidemia is one of the necessary conditions for atherosclerosis and is also an important factor in the occurrence and development of acute myocardial infarction. It can be seen from the chart that the blood lipid of young patients is worse than that of elderly patients, but the metabolism rate of young patients is significantly faster than that of the elderly. At the same time, it can be found that the levels of UA and HCY in young patients are significantly higher than those in the elderly group, which may be one of the reasons for the occurrence of STEMI in young people^[6].

Some studies have shown that uric acid and homocysteine are involved in the occurrence and development of STEMI in CV system and its metabolic evolution. It has been shown that the increase of circulating uric acid levels (with the influence of lifestyle and diet) has become a harmful factor for human cardiovascular health^[7-8]. A variety of factors can affect serum uric acid levels, some of which lead to hyperuricemia in humans by causing excessive uric acid production or decreased uric acid excretion. Although elevated uric acid concentration has been strongly associated with CAD in several studies, the exact mechanism of the association between uric acid and CAD has not been fully demonstrated. Several studies have shown that elevated uric acid levels play an important role in the development and progression of STEMI, which led the author to speculate that uric acid may be one of the predictors of acute cardiovascular events, and routine screening of uric acid levels may be helpful, which is also consistent with the results of this study^[7-12]. However, the level of uric acid should be controlled in order to reduce the incidence of CAD and its related mortality, but there is no clear guideline in China. However, relevant studies have shown that reducing uric acid levels through uric acid excretion drugs can reduce the adverse effects of high uric acid levels on vascular endothelium, blood pressure and inflammation^[13-15]. Killip classification is a widely accepted prognostic indicator for heart failure after AMI. A number of studies have shown that there is a correlation between uric acid concentration and Killip classification^[16], indicating that uric acid level may be a standard for risk stratification after AMI^[17]. This study also evaluated the Killip classification of cardiac function after AMI and found that the mortality rate of grade IV was 85–90%.

Homocysteine, an amino acid derived from methionine, plays a key role in vascular injury and thrombosis, suggesting its potential role in regulating the pathogenesis of AMI^[18-20]. Studies have shown that serum HCY levels in patients with AMI are higher than those in patients with stable angina pectoris and healthy people, and increased levels of HCY are associated with increased mortality, suggesting the potential of HCY as a biomarker for predicting angina pectoris occurrence and survival^[21]. Similar to previous studies, the results of our current study showed that HCY levels were significantly increased in patients with AMI. Therefore, HCY level was positively correlated with infarct size in patients with AMI. As one of the most fatal cardiovascular diseases, the prognosis of AMI is still not ideal^[22,23]. It is necessary to further evaluate the role of HCY level in predicting MACE in AMI patients. A previous study showed that AMI patients with high HCY levels had an increased incidence of MACE compared with AMI patients with low HCY levels^[24].

A further comparison of angiographic and clinical features (**Table 3**) showed that young patients with STEMI had more single-vessel disease, whereas older patients had more multivessel disease. This is also consistent with the results of Desai *et al.*(2023)^[25-27]. This study showed that the lesion of the left anterior descend-

ing coronary artery was more common in young patients, while the right coronary artery was more common in elderly patients. In order to more accurately understand the number, functional impact, location and severity of coronary artery lesions, this study performed SYNTAX score. The SYNTAX score is a scoring tool that is based on coronary imaging and accurately quantified according to the characteristics of coronary artery lesions. Statistical analysis showed that the degree of vascular lesions in the elderly group was higher than that in the young group. This study also found that in terms of inducing factors, the anxiety and depression of young patients were significantly higher than those of elderly patients, which was also closely related to young people's living habits and social pressure, but the onset of young patients was more significant than that of elderly patients. Therefore, some relevant expert surveys have shown that about one-third of patients with myocardial infarction suffer from severe depression, and about one-fifth of patients suffer from mild depression or depressive symptoms^[28]. Depression can induce adverse cardiovascular events and further affect the prognosis of percutaneous coronary intervention (PCI), which also warns us that we need to pay more attention to the mental health problems of young people^[29].

Finally, the patients with STEMI were divided into a cardiovascular event group and a non-cardiovascular event group according to the statistics of MACE events in all enrolled patients (**Table 4**). It was found that hyperuricemia was the most significant predictor in the youth group, while diabetes and a family history of IHD were predictive of MACE in both the youth and the elderly groups, which is consistent with the correlation study by Tscharré *et al.* (2018)^[30].

In conclusion, in addition to smoking, alcohol, and dyslipidemia, one should not only pay attention to those with a family history of cardiovascular disease but also understand and control blood uric acid levels in young adults. According to the results of this study, the detection and effective treatment of diabetes may also reduce the incidence of acute myocardial infarction in young patients in the future. This study has some limitations. Due to the limited sample size and lack of a validation cohort, further multicenter, large-scale studies are needed.

Funding

Science and Technology Project of Department of Science and Technology of Yunnan Province (Project No.: 202102AY070001-030); The Talent Training Fund of the Joint Logistics Support Force (Project No.: 20220105); Science and Technology Project of the 920th Hospital of the Joint Logistics Support Force (Project No.: 2020YGD11)

Disclosure statement

The authors declare no conflict of interest.

References

- [1] Tirdea C, Hostiu S, Moldovan H, et al., 2022, Identification of Risk Genes Associated with Myocardial Infarction: Big Data Analysis and Literature Review. *International Journal of Molecular Sciences*, 23(23): 15008.
- [2] Zhao D, 2021, Epidemiological Features of Cardiovascular Disease in Asia. *Journal of the American College of Cardiology: Asia*, 1(1): 1–13.
- [3] Wilson BH, Poh KK, 2023, Addressing the Global Burden of CVD Through “ACCElERated” Action. *Journal of the American College of Cardiology*, 81(25): 2472–2475.
- [4] Emanuel EJ, Gudbranson E, Van Parys J, et al., 2021, Comparing Health Outcomes of Privileged US Citizens with

those of Average Residents of Other Developed Countries. *JAMA Internal Medicine*, 181(3): 339–344.

- [5] Belhoul-Fakir H, Wu J, Yeow YL, et al., 2023, Injury to the Tunica Media Initiates Atherogenesis in the Presence of Hyperlipidemia. *Frontiers in Cardiovascular Medicine*, 10: 1152124.
- [6] Liu CW, 2021, Serum Uric Acid: A Murderer or Bystander for Cardiac-related Mortality? *The Journal of Rheumatology*, 48(11): 1639–1640.
- [7] Tian T, Liu X, Li T, et al., 2021, Detrimental Effects of Long-term Elevated Serum Uric Acid on Cognitive Function in Rats. *Scientific Reports*, 11(1): 6732.
- [8] Zhang P, Chen L, Li Z, et al., 2022, Association Between Serum Uric Acid Levels and Traditional Cardiovascular Risk Factors in Xiamen Residents of China: A Real-world Study. *Frontiers in Cardiovascular Medicine*, 2022(9): 913437.
- [9] Pilemann-Lyberg S, Hansen TW, Tofte N, et al., 2019, Uric Acid Is an Independent Risk Factor for Decline in Kidney Function, Cardiovascular Events, and Mortality in Patients with Type 1 Diabetes. *Diabetes Care*, 42(6): 1088–1094.
- [10] Kanbay M, Xhaard C, Le Floch E, et al., 2022, Weak Association Between Genetic Markers of Hyperuricemia and Cardiorenal Outcomes: Insights From the STANISLAS Study Cohort With a 20-Year Follow-Up. *Journal of the American Heart Association*, 11(9): e023301.
- [11] Centola M, Maloberti A, Castini D, et al., 2020, Impact of Admission Serum Acid Uric Levels on In-hospital Outcomes in Patients with Acute Coronary Syndrome. *European Journal of Internal Medicine*, 2020(82): 62–67.
- [12] Maloberti A, Giannattasio C, Bombelli M, et al., 2020, Hyperuricemia and Risk of Cardiovascular Outcomes: The Experience of the URRAH (Uric Acid Right for Heart Health) Project. *High Blood Pressure & Cardiovascular Prevention*, 2020(27): 121–128.
- [13] De Becker B, Hupkens E, Dewachter L, et al., 2021, Acute Effects of Hypouricemia on Endothelium, Oxidative Stress, and Arterial Stiffness: A Randomized, Double-blind, Crossover Study. *Physiological Reports*, 9(17): e15018.
- [14] Kuwabara M, Kodama T, Ae R, et al., 2023, Update in Uric Acid, Hypertension, and Cardiovascular Diseases. *Hypertension Research*, 46(7): 1714–1726.
- [15] Ikhsan I, Idroes R, Azharuddin A, et al., 2023, Fatty Acid-rich Extract from *Holothuria atra* for Hyperuricemia via Expressions Modulation of *GLUT9a* and *GLUT9b* in Rat Model. *Molecules*, 28(10): 3981.
- [16] Watanabe S, Usui M, 2021, Serum Uric Acid Level Is Associated with Reperfusion Ventricular Arrhythmias in Acute Myocardial Infarction. *Diabetes & Metabolic Syndrome: Clinical Research & Reviews*, 15(4): 102198.
- [17] Kajana V, Massaro G, Somaschini A, et al., 2022, Serum Uric Acid in Patients with ST-segment Elevation Myocardial Infarction: An Innocent Bystander or Leading Actor? *Nutrition, Metabolism and Cardiovascular Diseases*, 32(7): 1583–1589.
- [18] Hermann A, Sitdikova G, 2021, Homocysteine: Biochemistry, Molecular Biology and Role in Disease. *Biomolecules*, 11(5): 737.
- [19] Han L, Miao Y, Zhao Y, et al., 2022, The Binding of Autotaxin to Integrins Mediates Hyperhomocysteinemia-potentiated Platelet Activation and Thrombosis in Mice and Humans. *Blood Advances*, 6(1): 46–61.
- [20] Deharo P, Marlinge M, Guiol C, et al., 2020, Homocysteine Concentration and Adenosine A2A Receptor Production by Peripheral Blood Mononuclear Cells in Coronary Artery Disease Patients. *Journal of Cellular and Molecular Medicine*, 24(16): 8942–8949.
- [21] Zhang N, Shi F, Liang H, et al., 2021, The Feasibility of using HCY, CRP, and Cys-C to Analyze AMI Patients' Disease Conditions and Prognoses. *American Journal of Translational Research*, 13(4): 2724.
- [22] Lai X, Liu H, Hu X, et al., 2021, Acute Myocardial Infarction in Chinese Medicine Hospitals in China from 2006 to 2013: An Analysis of 2311 Patients from Hospital Data. *Chinese Journal of Integrative Medicine*, 2021(27): 323–329.
- [23] Song J, Murugiah K, Hu S, et al., 2021, Incidence, Predictors, and Prognostic Impact of Recurrent Acute Myocardial

Infarction in China. *Heart*, 107(4): 313–318.

- [24] Yan J, Zhou J, Huang J, et al., 2021, The Outcomes of Acute Myocardial Infarction Patients Comorbidity with Hypertension and Hyperhomocysteinemia. *Scientific Reports*, 11(1): 22936.
- [25] Desai R, Mishra V, Chhina A K, et al., 2023, Cardiovascular Disease Risk Factors and Outcomes of Acute Myocardial Infarction in Young Adults: Evidence from Two Nationwide Cohorts in the United States a Decade Apart. *Current Problems in Cardiology*, 2023(1): 101747.
- [26] Huang J, Li ZZ, Zhang JM, et al., 2013, Comparison of Clinical Features and Outcomes of Patients with Acute Myocardial Infarction Younger Than 35 Years Old with Those Older Than 65 Years Old. *The American Journal of the Medical Sciences*, 346(1): 52–55.
- [27] Arora S, Stouffer GA, Kucharska-Newton AM, et al., 2019, Twenty Year Trends and Sex Differences in Young Adults Hospitalized with Acute Myocardial Infarction: The ARIC Community Surveillance Study. *Circulation*, 139(8): 1047–1056.
- [28] Munyombwe T, Hall M, Dondo TB, et al., 2020, Quality of Life Trajectories in Survivors of Acute Myocardial Infarction: A National Longitudinal Study. *Heart*, 106(1): 33–39.
- [29] Wang Y, Zhang S, Zhang G, et al., 2020, Association Between Type D Personality and In-stent Restenosis in Patients Treated with Percutaneous Coronary Intervention: A Mediation Analysis of Dietary Patterns. *Journal of Psychosomatic Research*, 2020(138): 110244.
- [30] Tscharré M, Herman R, Rohla M, et al., 2018, Uric Acid is Associated with Long-term Adverse Cardiovascular Outcomes in Patients with Acute Coronary Syndrome Undergoing Percutaneous Coronary Intervention. *Atherosclerosis*, 2018(270): 173–179.

Publisher's note

Bio-Byword Scientific Publishing remains neutral with regard to jurisdictional claims in published maps and institutional affiliations.